

PMR Inc

MACHINING/FABRICATION, HEAVY EQUIPMENT,
AGRICULTURAL/INDUSTRIAL/COMMERCIAL REPAIR SERVICES

Perham Machine & Repair, Inc.

42567 450th Ave. South

PO Box 451

Perham, MN 56573

PH: 218-346-5222 - Fax: 218-346-5294 - Text: 218-298-4672

pmr@arvlg.net

perhammachine.com

Whether we are designing or fabricating a new project, repairing or improving upon old/existing projects, it is our mission to enhance and strengthen your business with our experience, imagination, and a simple "common-sense" way of solving issues that can occur at any time.

As you'll see in this book, we utilize a multitude of equipment and capabilities. We certainly are not lacking in imagination or resilience, attacking each problem and situation head first.

MACHINING & FABRICATION

- CNC VERTICAL MACHINING CENTER
- CNC PLASMA CUTTING TABLE
- CNC LATHE
- UNIVERSAL LATHE w/TAPER ATTACHMENT
- HYDRAULIC DRIVE MACHINE LATHE w/TAPER ATTACHMENT
- DIGITAL READOUT MACHINE LATHE
- 150 TON HYDRAULIC PRESS BRAKE
- 250 TON UNIVERSAL HYDRAULIC PRESS
- VERTICAL MILLING MACHINE
- SMALL MILL/DRILLING MACHINE
- WIRE FEED WELDERS / TIG WELDING SYSTEM
- IRON WORKER
- PLATE STEEL ROLLER
- BAND SAW
- PIPE BENDER

HEAVY EQUIPMENT & SERVICES

- ARTICULATED PAYLOADER
- ROUGH TERRAIN TELEHANDLER/FORKLIFT
- CAT FORKLIFT
- SNORKEL SCISSOR LIFT
- D.O.T. INSPECTIONS
- MECHANICAL AND HYDRAULIC MAINTENANCE
- OTHER AGRICULTURAL, COMMERCIAL, AND INDUSTRIAL REPAIR

IMAGE GALLERIA

- MACHINING/FABRICATION
- MAINTENANCE/REPAIRS



SECTION I
MACHINING & FABRICATION

**MILLTRONICS® PARTNER I
CNC VERTICAL MACHINING CENTER**



MANUAL AND AUTOMATIC MACHINING

TRAVELS: Y - 16", X - 34", Z - 20"

TWELVE POSITION TOOL CHANGE, CENTURION 5/7SLS CONTROLLER,
DUAL KURT MILLING VICES

USED FOR A VARIETY OF MACHINING APPLICATIONS (1-1000 pcs.) SUCH AS:

COMPONENT PARTS FOR INDUSTRIAL PRODUCTION,
CONSTRUCTION/AGRICULTURAL MACHINERY AND ATTACHMENTS, JIGS AND
COMPONENTS FOR METAL FABRICATION INDUSTRIES, DECORATIVE ENGRAVING
(SIGNS AND HOME DECOR)

LOCKFORMER® VULCAN 1200 CNC PLASMA CUTTING TABLE



MANUAL AND COMPUTERIZED CUTTING

24 GAUGE FINE CUT MATERIAL
HYPERTHERM 1250 1 INCH PLATE HEAVY CUT MATERIAL
HYPERMAX 200 2 INCH+ HEAVY CUT MATERIAL

TABLE SIZE: 60 INCHES x 120 INCHES

**USED FOR A VARIETY OF CUTTING APPLICATIONS
(1 TO 1000+ PARTS OR ITEMS SUCH AS:**

BRACKETS, COMPONENT PARTS FOR INDUSTRIAL PRODUCTION, CONSTRUCTION,
AGRICULTURAL MACHINERY/ATTACHMENTS, JIGS, FIXTURES AND COMPONENTS
FOR THE METAL FABRICATION INDUSTRY, DECORATIVE DESIGNS (e.g. SIGNS, HOME
DECOR, CAMPFIRE RINGS)

BRING IN A PART/DESIGN OR LET US DESIGN SOMETHING FOR YOU

PMR Inc

**DAEWOO® PUMA 12
CNC LATHE**



MANUAL AND AUTOMATIC COMPUTERIZED MACHINING

FANUC 11T CONTROLLER, 25HP, 12" HYDRAULIC CHUCK, 3" CAPACITY HOLE IN
HEAD STOCK, TEN POSITION TURRET TOOL HANDLER, CHIP CONVEYOR
AND AUTO OILER

USED FOR A VARIETY OF MACHINING APPLICATIONS (1-1000 pcs.) SUCH AS:

COMPONENT PARTS FOR INDUSTRIAL PRODUCTION,
CONSTRUCTION/AGRICULTURAL MACHINERY AND ATTACHMENTS, JIGS AND
COMPONENTS FOR METAL FABRICATION INDUSTRIES, DECORATIVE ENGRAVING
(SIGNS AND HOME DECOR)

**NARDINI® UNIVERSAL LATHE
W/ TAPER ATTACHMENT**



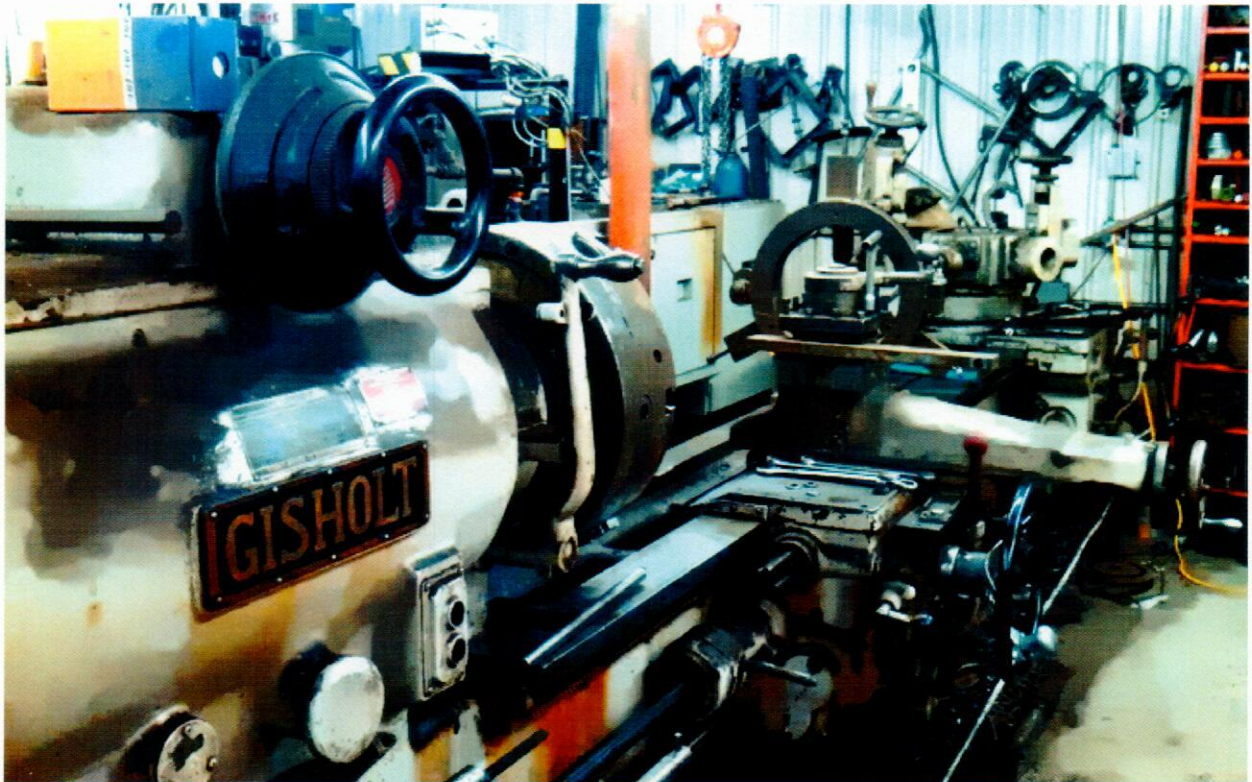
15-3/8 INCHES SWINGOVER BED
22.70 INCHES SWINGOVER GAP
60 INCHES BETWEEN CENTERS, DIGITAL READOUT

COMPLETE THREADING:
INCH THREADS, METRIC THREADS, MODULE THREADS, DIAMETRAL PITCH THREADS

2 INCH HOLE IN HEAD STOCK

USED FOR VARIOUS TYPES OF CIRCULAR MACHINING, SUCH AS:
THREAD CUTTING AND TURNING TAPERS

***GISHOLT® HYD. DRIVE MACHINE
LATHE W/ TAPER ATTACHMENT***



4" HOLE IN HEAD STOCK, 24" SWING

18" 3-JAW SCROLL CHUCK, 22" 4-JAW INDEPENDENT CHUCK

96" BETWEEN CENTERS, SIX POSITION POWERED TURRET TAIL STOCK

THREADING CAPABILITY IN INCHES

**USED FOR DIFFERENT TYPES OF CIRCULAR MACHINING, THREAD CUTTING
AND TURNING TAPERS**

LeBLOND[®] DIGITAL READOUT MACHINE LATHE



DIGITAL READOUT, INCH AND METRIC THREADING, COOLING SYSTEM

2.25 " HEAD STOCK HOLE

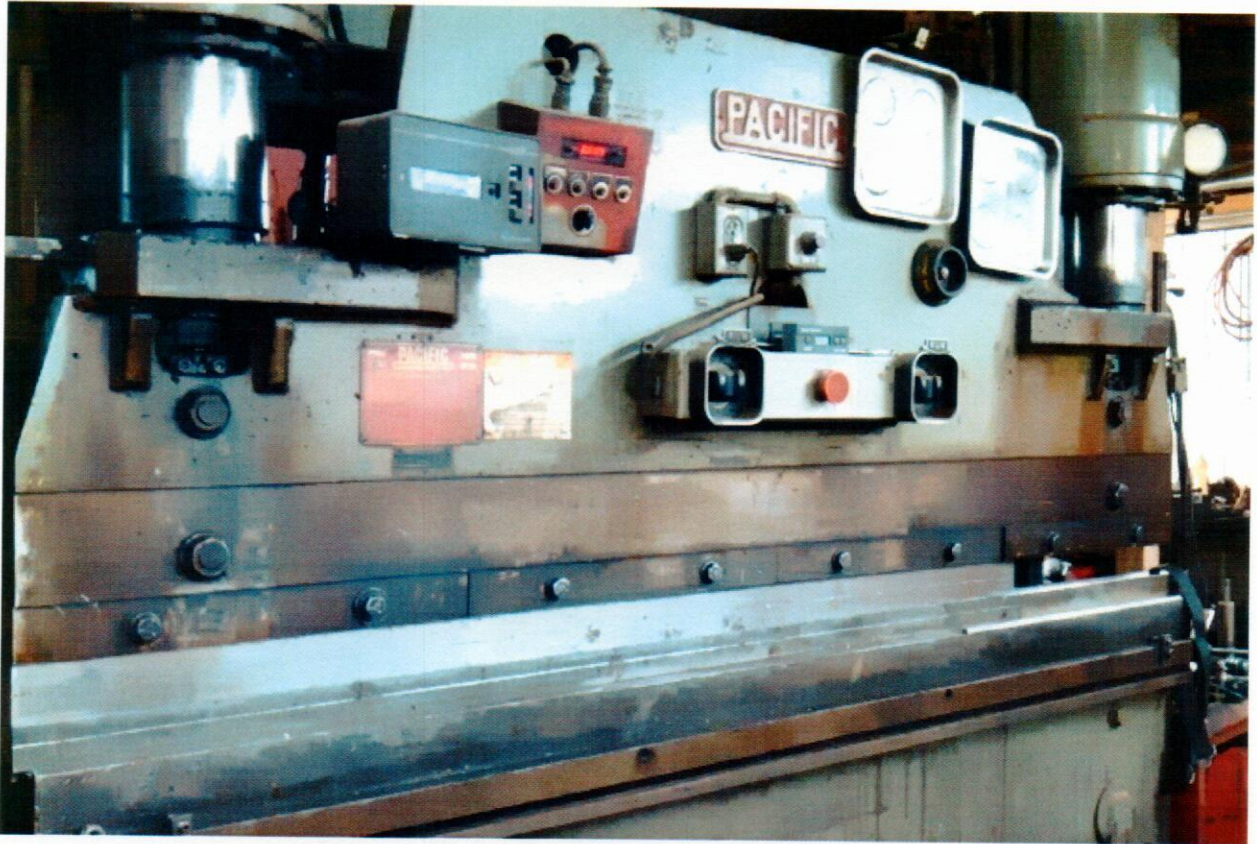
2-112 TPI THREADING CAPABILITY AND .25-12MM METRIC PITCH

15.5" SWING, 8" CHUCK, 4-JAW SCROLL

30" BETWEEN CENTERS

UTILIZED FOR VARIOUS TYPES OF CIRCULAR MACHINING AND THREAD CUTTING

**150 TON PACIFIC[®]
HYDRAULIC PRESS BRAKE**



DIGITAL BACK STOP, MANUAL AND AUTOMATIC CONTROLS

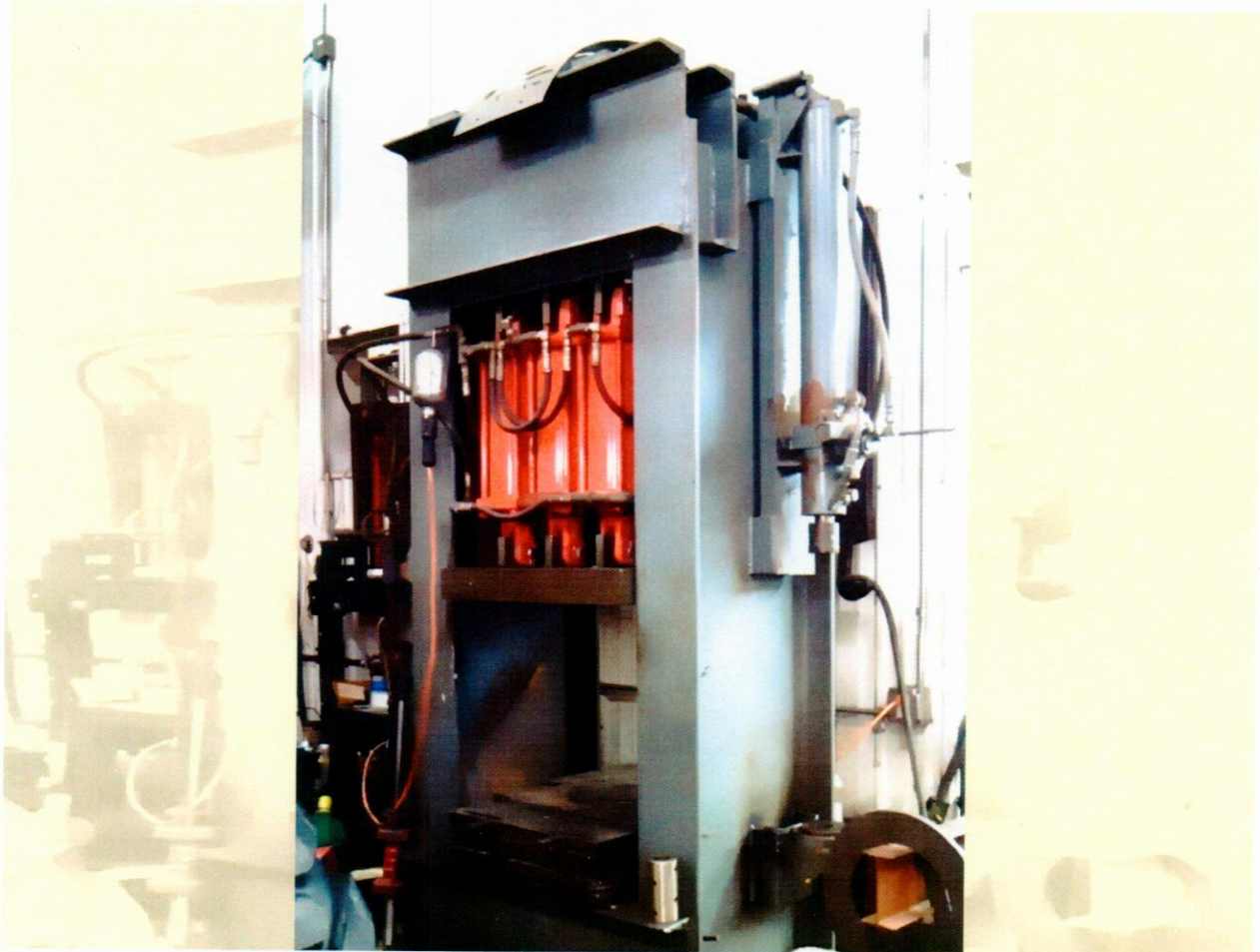
HAND OR FOOT OPERATION

MICROMETER HEIGHT ADJUSTMENTS

1/4" X 96" CAPACITY, 6.5" THROAT

72 " CAPACITY, UNLIMITED THROAT

**PMR Inc.® 250 TON
UNIVERSAL HYDRAULIC PRESS**



PUSH AREA SIZE:
24" HIGH (ADJUSTABLE)
24" WIDE/DEEP (FIXED)
THROUGH (ADJUSTABLE)

USED FOR REMOVAL AND INSTALLATION OF FORK LIFT TIRES, LARGE BEARINGS AND
GEARS, SLEEVES AND BUSHINGS, EXTRUDER BARREL LINERS, AND A
MULTITUDE OF OTHER ITEMS

ENCO[®] DIGITAL VERTICAL MILLING MACHINE



DIGITAL READOUT AND POWER FEEDS, MANUAL OPERATION

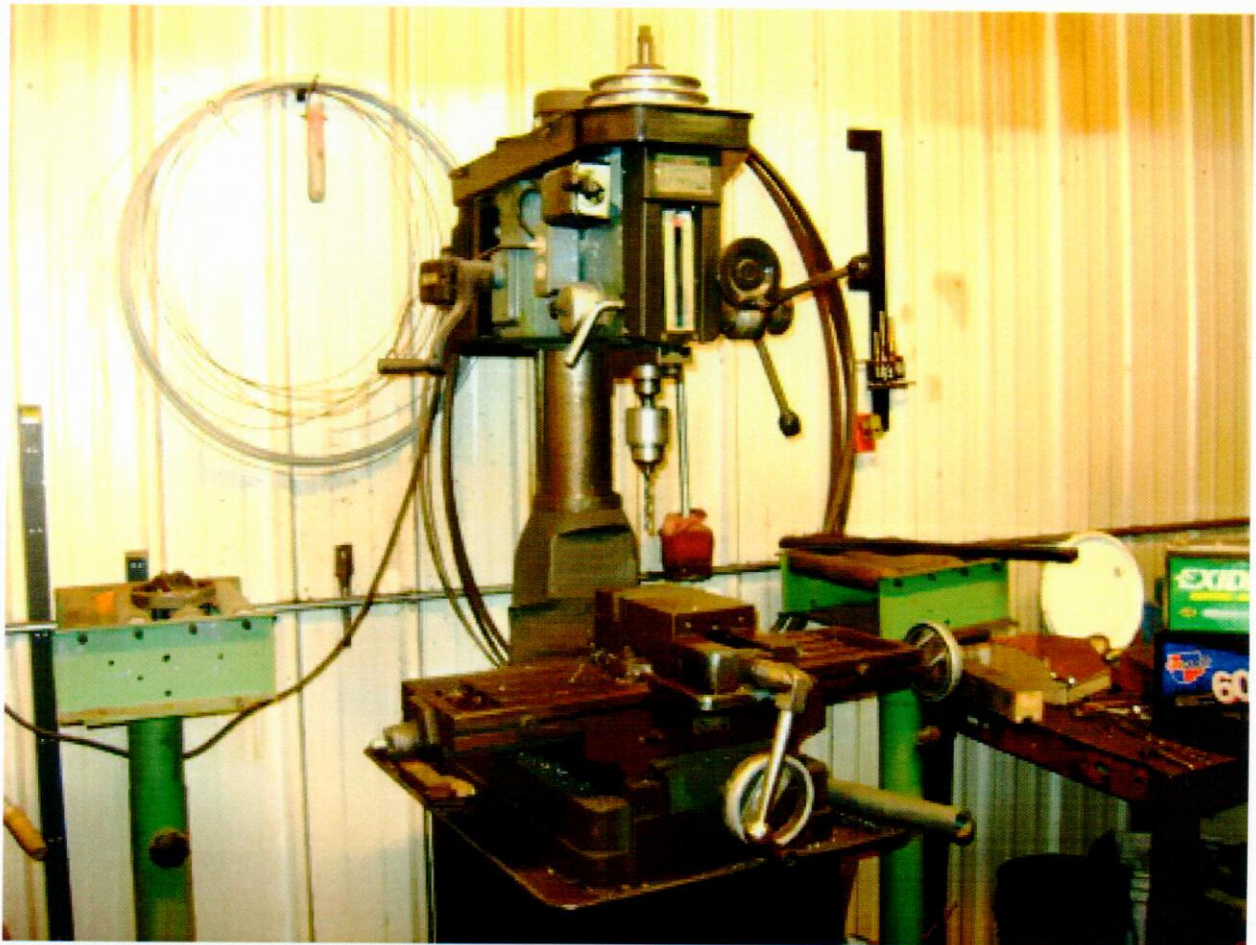
VARIABLE DRIVE SYSTEM, MANUAL OILER SYSTEM

9" X 42" TABLE, 16" KNEE TRAVEL, 4" QUILL TRAVEL

X TRAVEL: 12 INCHES / Y TRAVEL: 27 INCHES / Z TRAVEL: 12 INCHES

USED FOR DIFFERENT MACHINING SITUATIONS USING DIFFERENT
SETUP TOOLING AND FIXTURES

***SMALL MILL/
DRILL MACHINE***



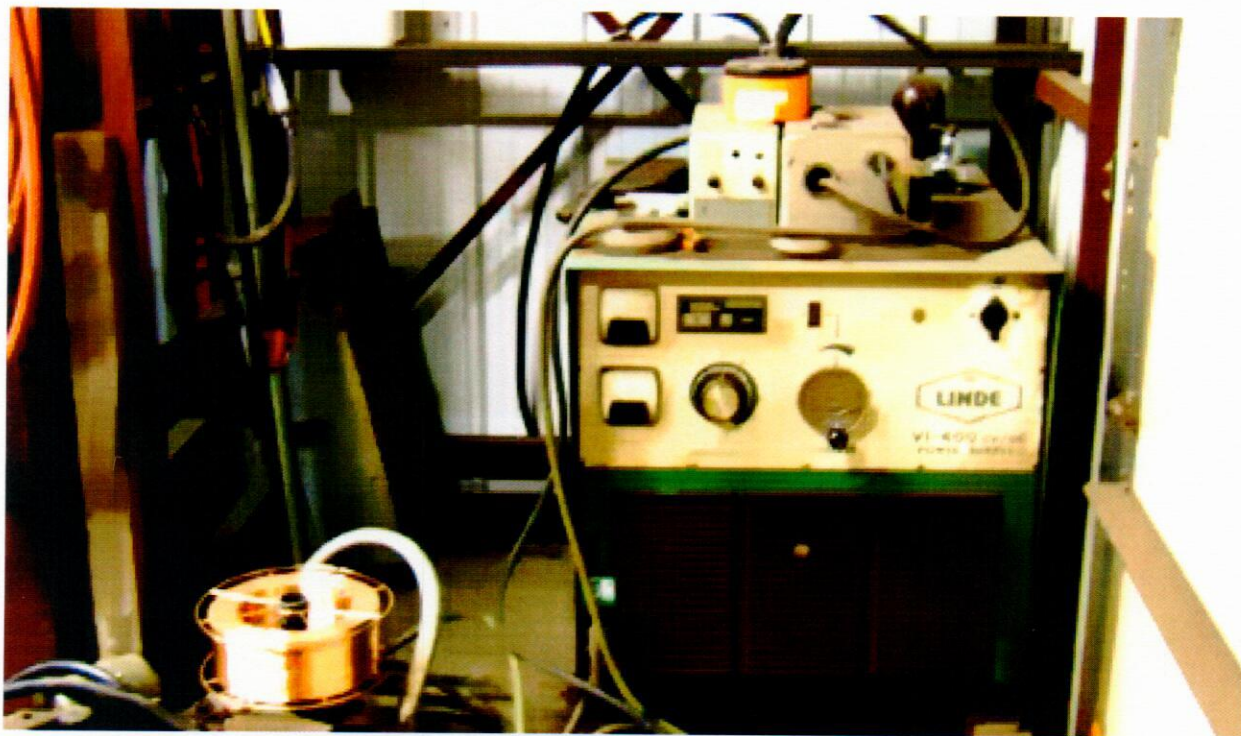
1.25" DRILL CAPACITY, .75" MILL CAPACITY

**MILLER® WIRE FEED
210 WELDER**



METAL FABRICATION AND/OR REPAIRS UP TO 3/8 INCH THICKNESS OF
REGULAR STEEL AND ALUMINUM

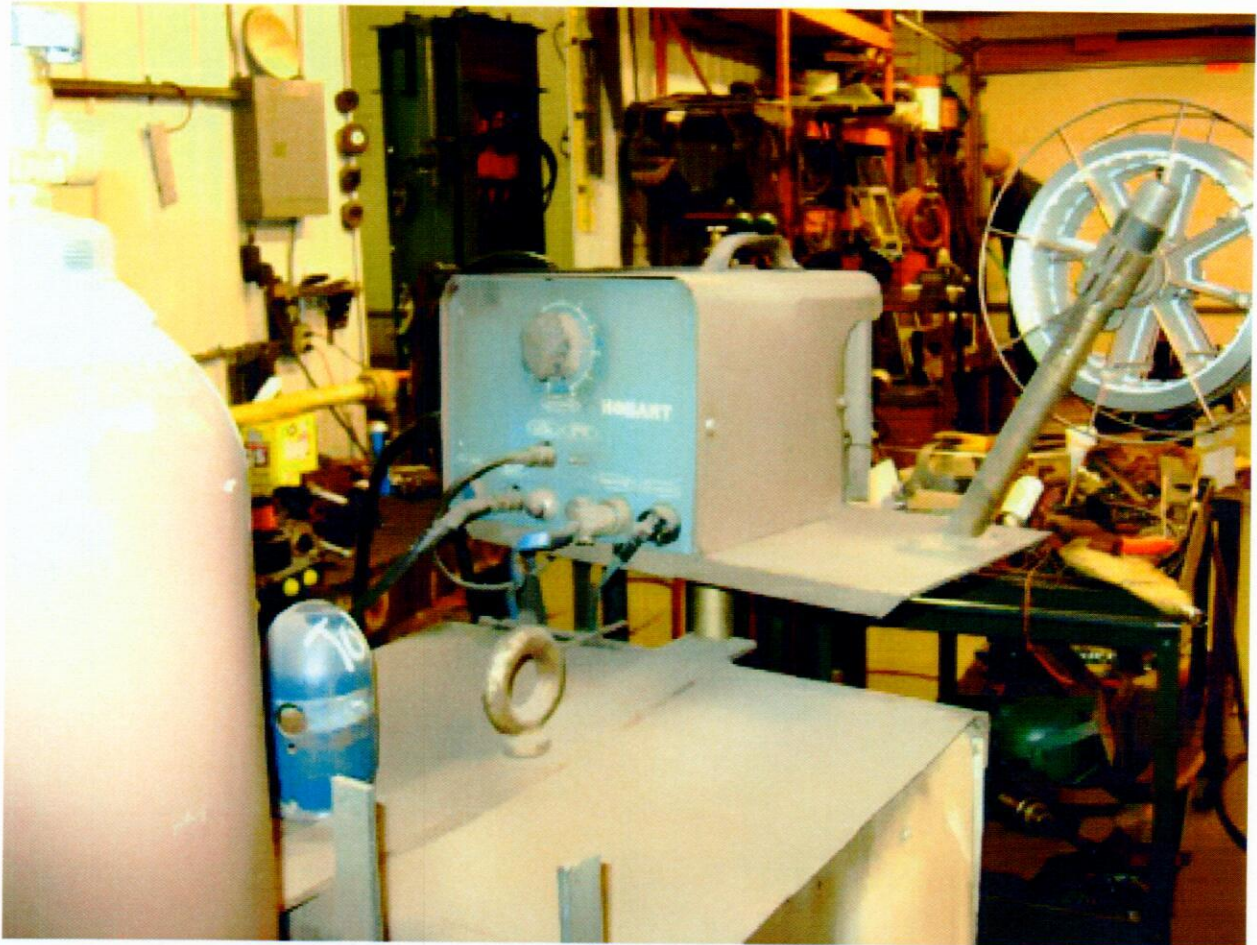
***LINDE® 400 AMP
WIREFEED WELDER***



UTILIZED FOR HEAVY WELDING

REQUIRED FOR REPAIRS OF EARTH MOVING EQUIPMENT, HEAVY STRUCTURES OF MATERIAL SIZES AND TYPES OF UP 2" PLATE STEEL AND BEAMS, HARD FACE WEAR PARTS FOR ROAD BUILDING EQUIPMENT, FOOD PROCESSING EQUIPMENT, ETC.

***HOBART® 300 AMP
MICROWIRE WIRE FEED WELDER***



WELDING OF ALUMINUM AND STAINLESS STEEL MATERIALS OF
UP TO 1-2" OF THICKNESS

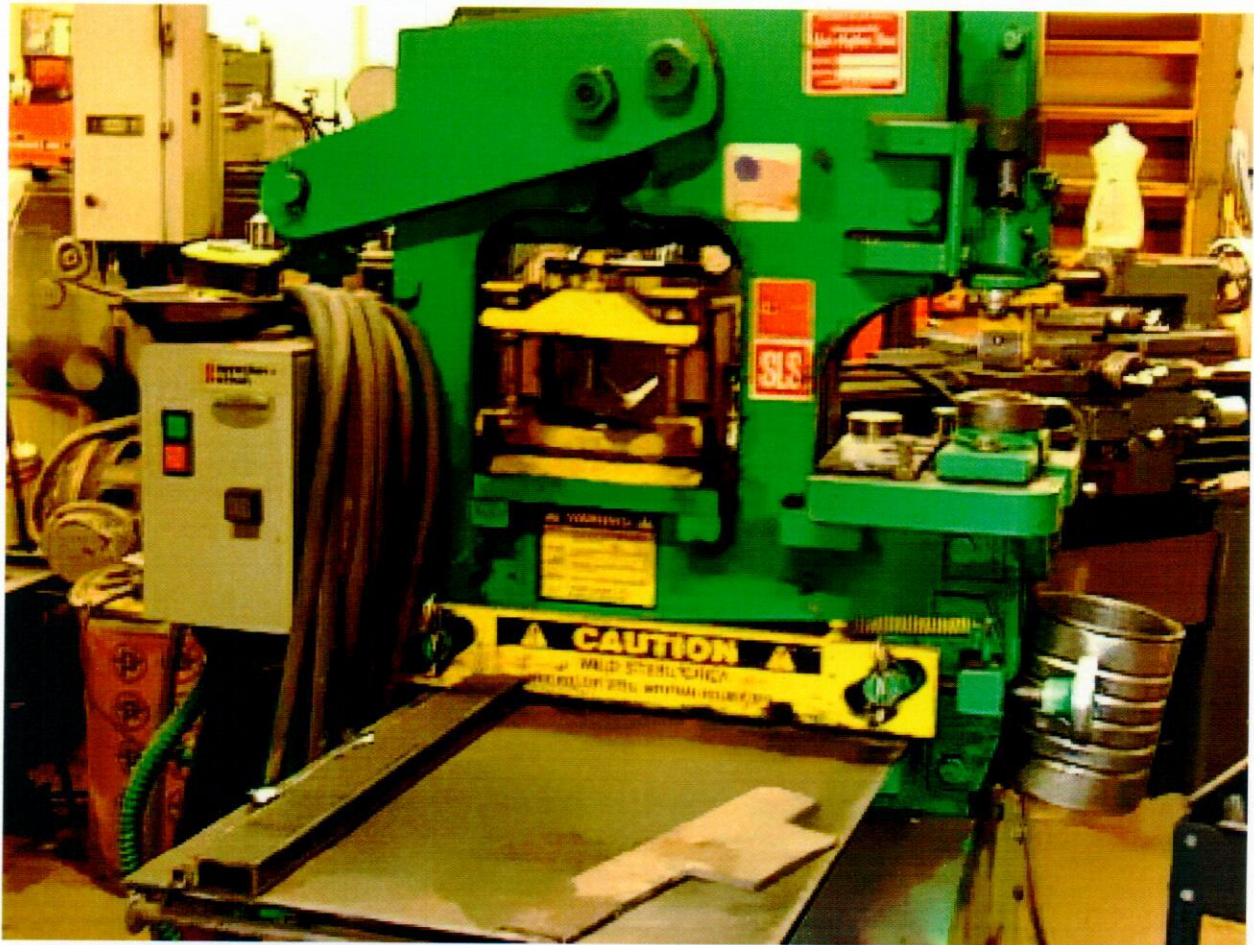
**MILLER[®]
WELDER**



HIGH FREQUENCY TIG WELDING SYSTEM

PMR Inc

**UNIHYDRO[®]
IRON WORKER**

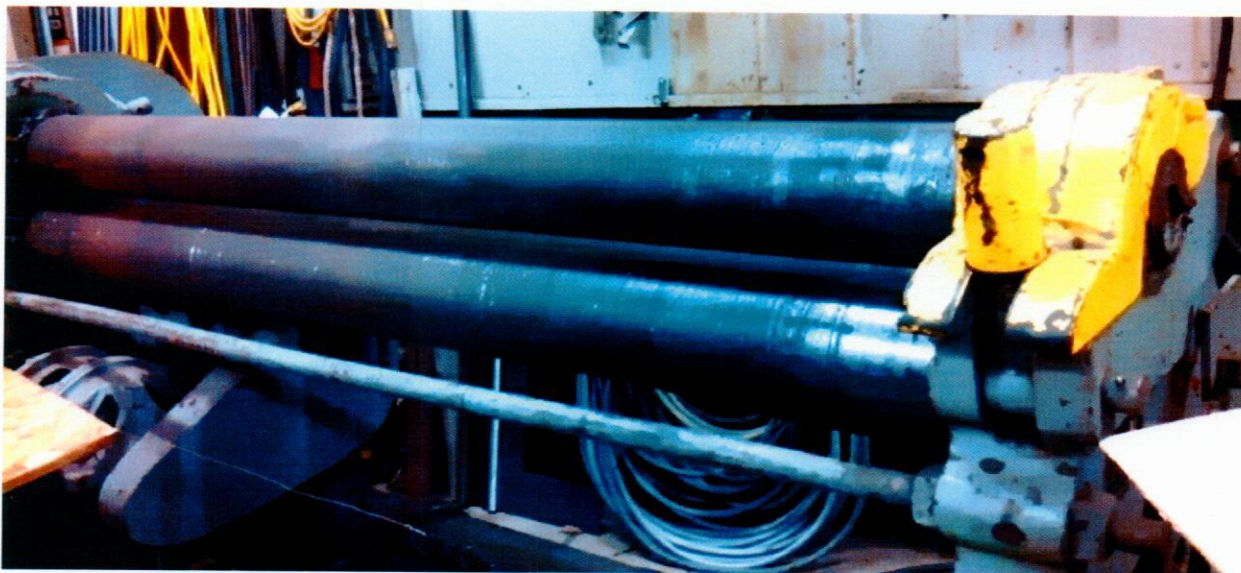


42 TON

14" SHEAR; PUNCH UP TO 1.25" DIAMETER
IN A VARIETY OF MATERIAL THICKNESSES

USED FOR SHEARING AND HOLE PUNCHING DIFFERENT TYPES OF MATERIALS

**MILTON® 72"
PLATE STEEL ROLLER**



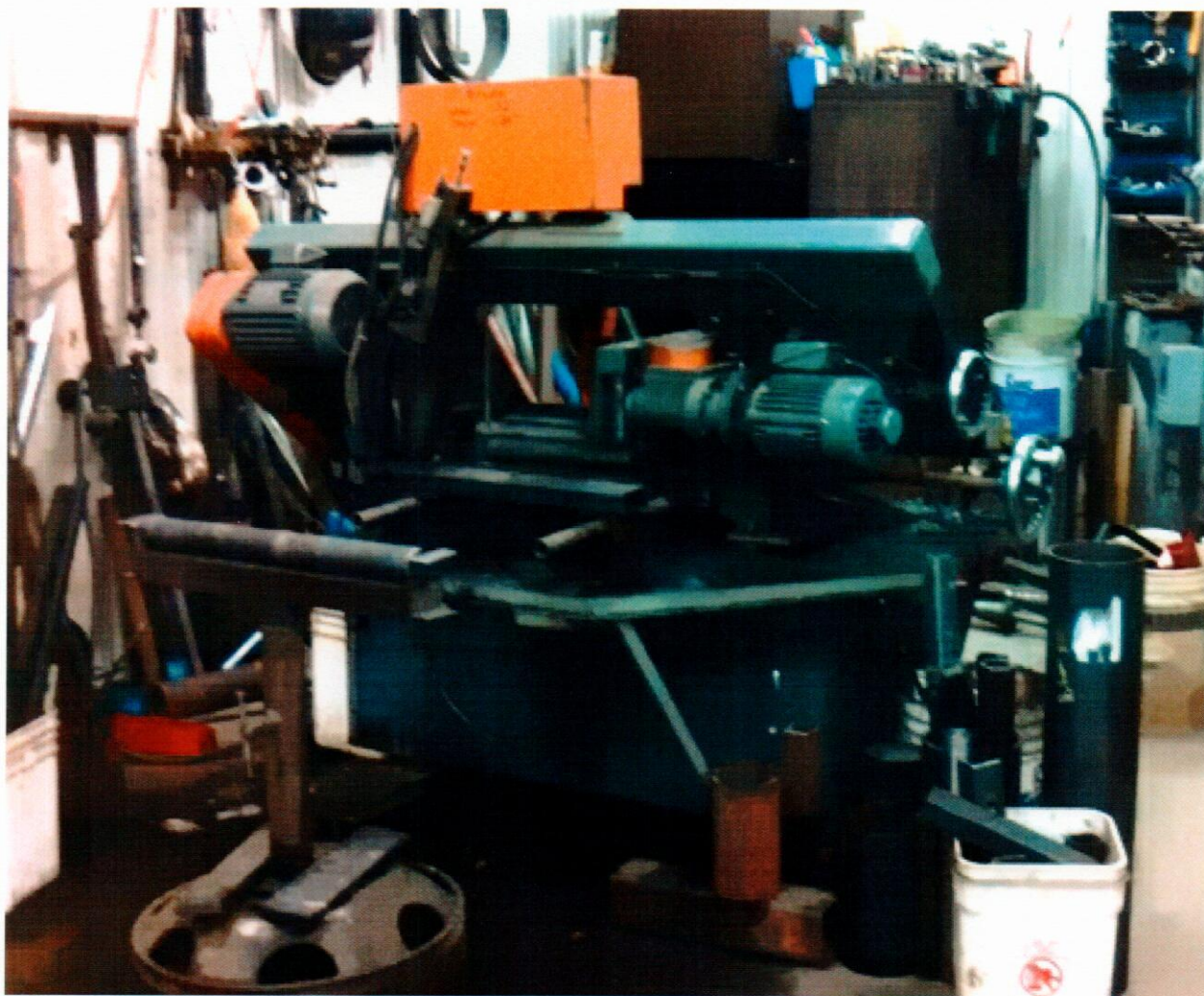
TWO SPEED

HYDRAULIC BACK ROLL

MECHANICAL BOTTOM ROLL

10 GAUGE FULL WIDTH MATERIAL

***ENCO[®] AUTO 13
BANDSAW***

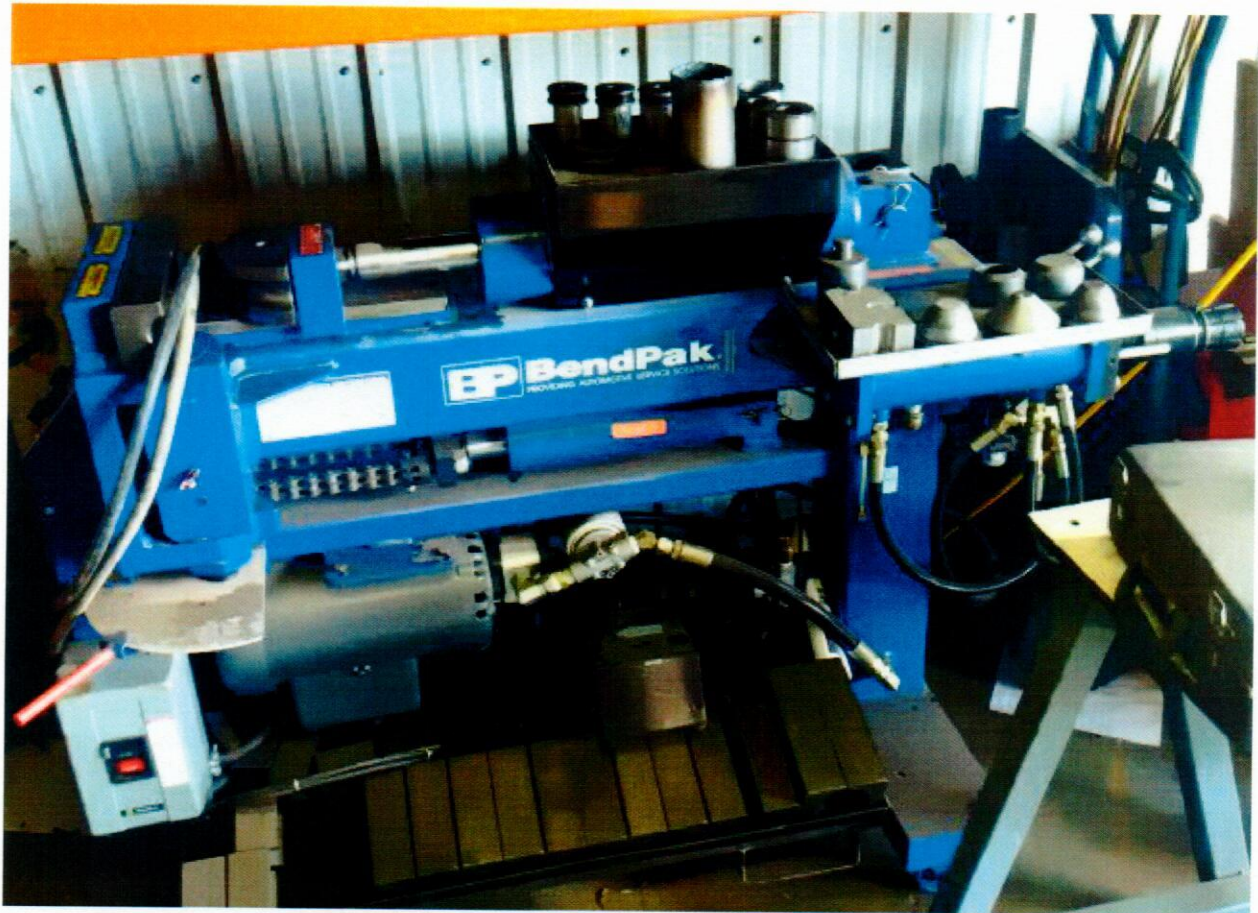


AUTOMATIC OR MANUAL FEED

14" X 11" CAPACITY

UTILIZED FOR THE CUTTING OF GENERAL USE MATERIALS, SUCH AS:
ROUNDS, SQUARES, ANGLES, BEAMS, AND CHANNELS

**BENDPAK®
PIPE BENDER**



TUBE BENDING UP TO 3 IN. 13 GAUGE BENDABLE TUBE

END EXPANSION OF TUBE, END SWEDGING

SECTION II
HEAVY EQUIPMENT AND SERVICES

**JOHN DEERE[®]
ARTICULATED PAYLOADER**



10,000 LB.+ LIFT CAPACITY, 2-SPEED TORQUE SHIFT

72 IN. x 102 IN. FORK CARRIAGE, 2.5 YD. BUCKET

USED FOR EARTH EXCAVATING OF DIFFERENT TYPES OF SOILS, SNOW REMOVAL OF
DRIVEWAYS AND LARGE AREAS/LOTS

EMPLOYED IN LIFTING AND MOVING LARGE PIECES OF EQUIPMENT OR OTHER
COMPONENTS LIKE PRODUCTION EQUIPMENT, AUTOMOBILES, TREES,
LOGS, POLES, ETC. WITH FORKS ATTACHED

PMR Inc

**LULL® 844B
ROUGH TERRAIN TELEHANDLER/FORKLIFT**



37 FT. LIFT HEIGHT

7 FT. CARRIAGE TRAVEL

8,000 LB. LIFT CLASS

48 IN. FORKS WITH TILT CARRIAGE, 4-SPEED TORQUE SHIFT

ALL WHEEL STEERING & ALL WHEEL DRIVE

PMR Inc

**CAT[®] V140
FORKLIFT**



14,000 LB. LIFT - 144 IN. MAST EXTEND HEIGHT
SIDE SHIFT MAST
72 IN. LONG ADJUSTABLE WIDTH FORKS, 72 IN. WIDE

**SNORKEL® SPL4084
SCISSOR LIFT**



750 LB. LIFT CAPACITY
EXTENDED PLATFORM: 72 IN. x 16 IN
HEIGHT: 40 FT. W/ STABILIZERS
ENGINE: GAS/PROPANE
FOUR WHEEL DRIVE, HIGH/LOW

PMR Inc

***D.O.T.
INSPECTIONS***



MINNESOTA CERTIFIED INSPECTION OF COMMERCE REGULATED VEHICLES

***MECHANICAL &
HYDRAULIC MAINTENANCE***



MECHANICAL AND HYDRAULIC MAINTENANCE AND REPAIR ON
LARGE TRUCKS, TRAILERS, SKID STEER LOADERS AND OTHER
CONSTRUCTION/AGRICULTURAL EQUIPMENT AND COMPONENTS

***OTHER AGRICULTURAL, COMMERCIAL, &
INDUSTRIAL REPAIR SERVICES***



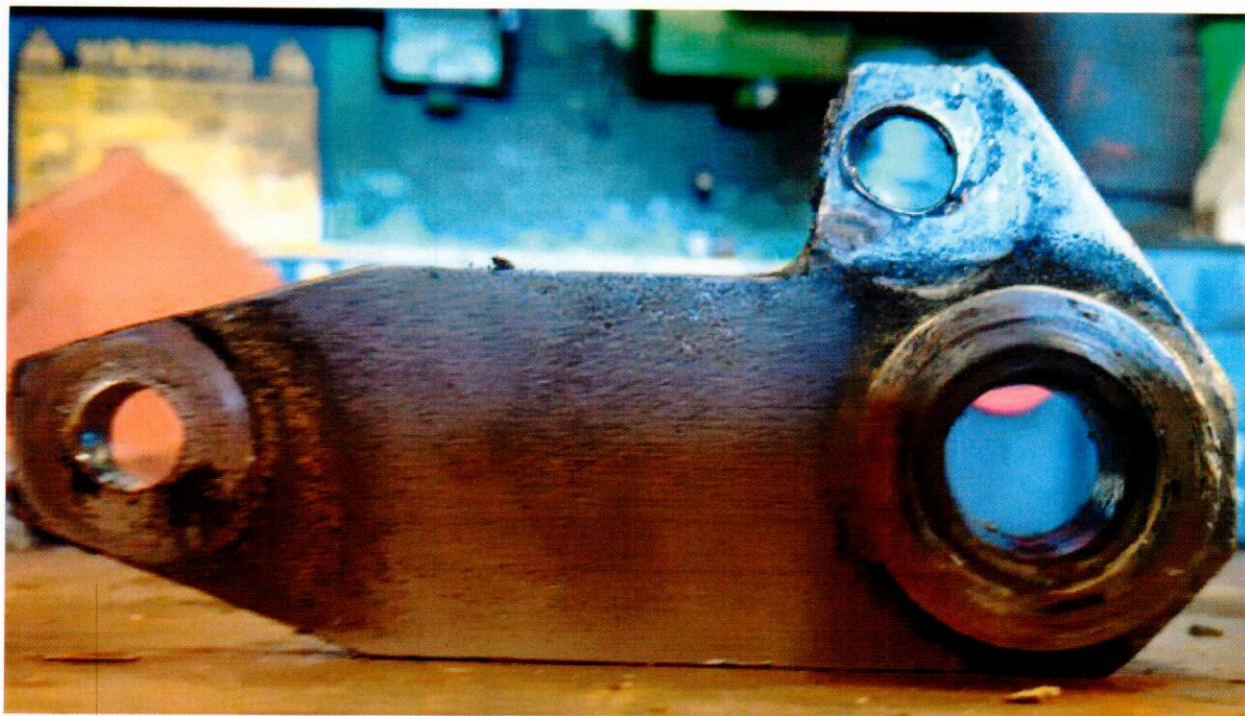
MILLS, ELEVATORS, CONVEYOR WORK, AND OTHER REPAIR SERVICES

PMR Inc

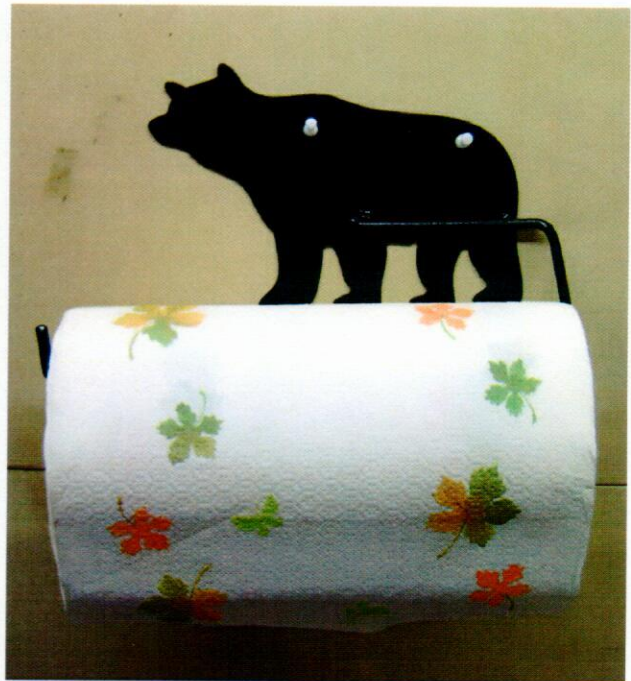
SECTION III
IMAGE GALLERIA



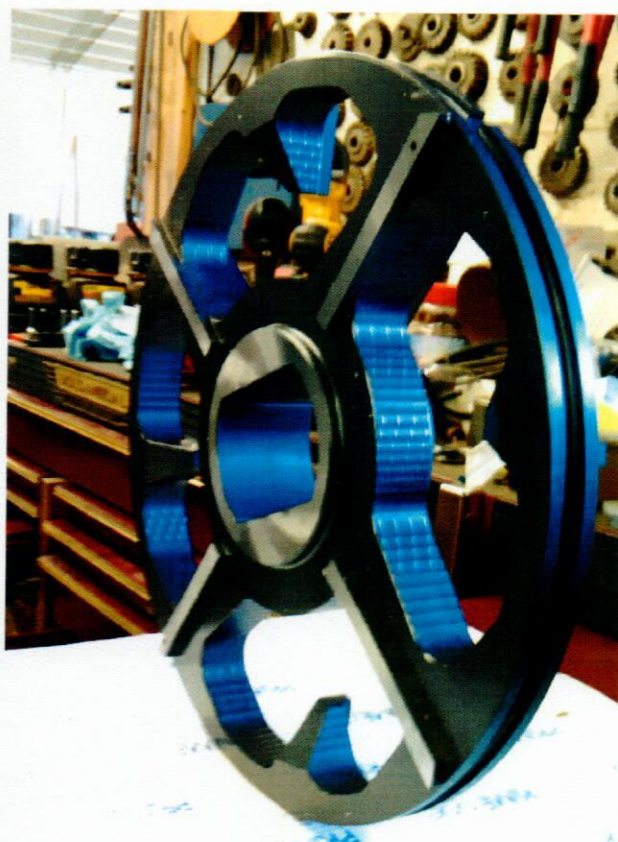
Design, build and installation of agricultural conveying systems



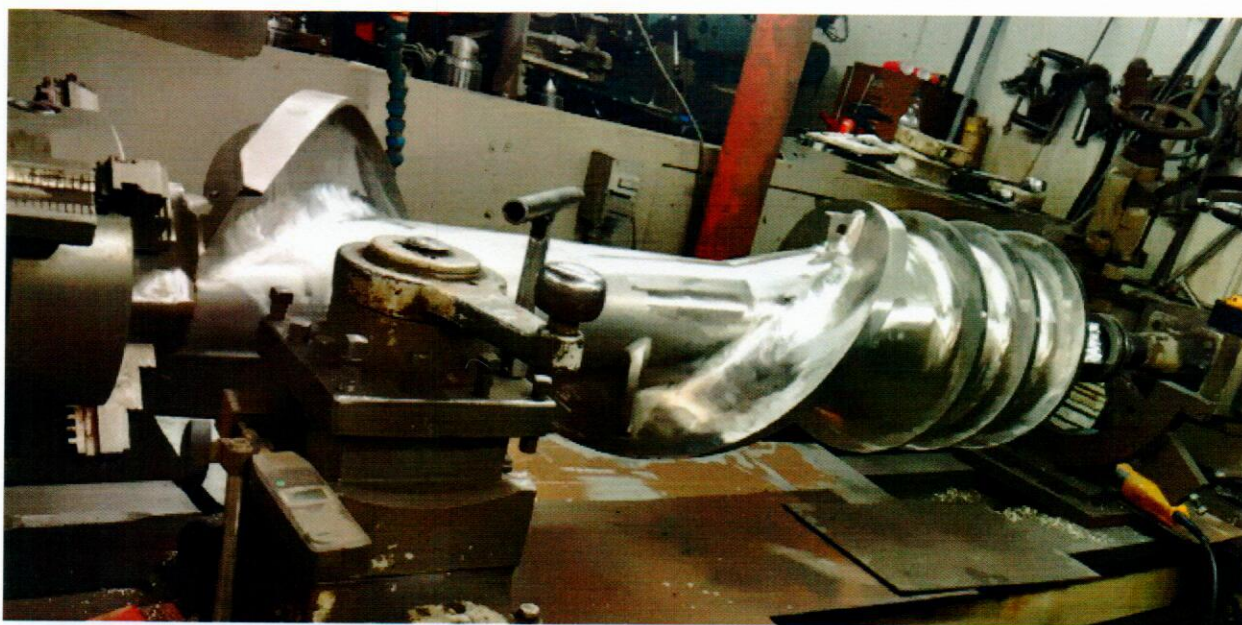
Bracket rebuild



CNC plasma cutting design examples



Left: Machining in anchor pins for rebuilding teeth on hypoid ring gear; Right: building a new meat grinder knife plate



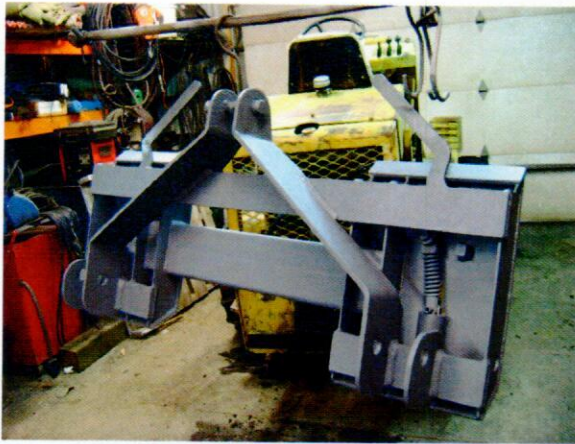
Rebuilding a large meat grinder screw (lathe)



Rebuilding heavy fifth wheel equipment trailer



Fabricating a conveyor tunnel for under a drying floor for an edible dry bean bin



Left: A fabricated universal quick attach adapter model; Right: a universal quick attach receiver plate



Stainless steel fine screen framework



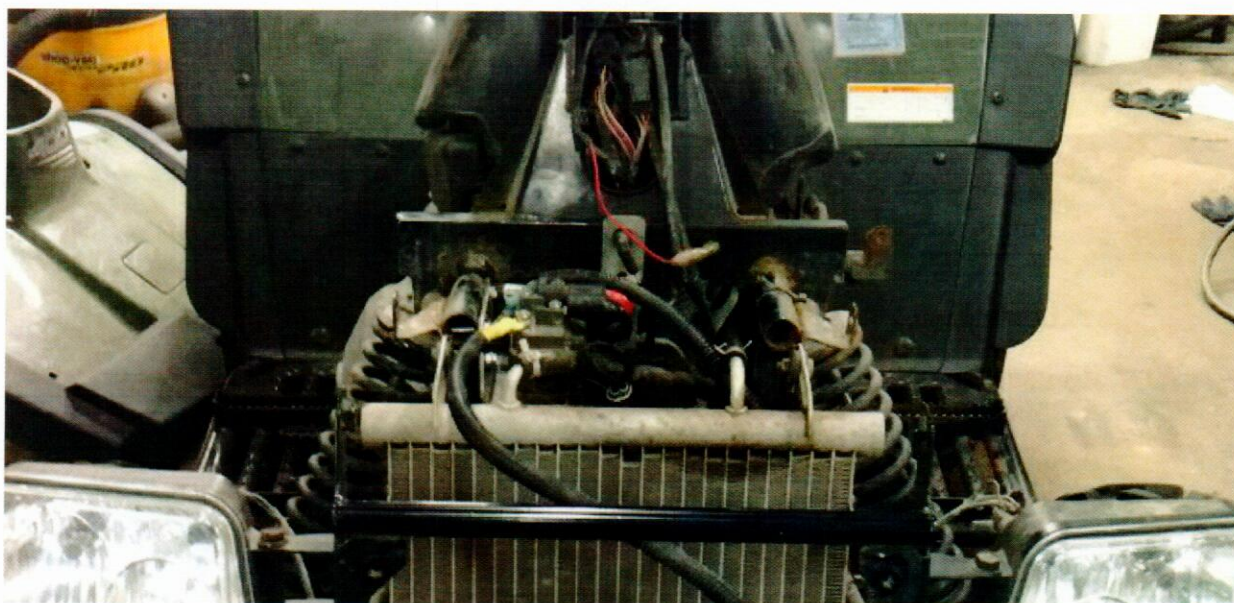
Turntable for box palletizer



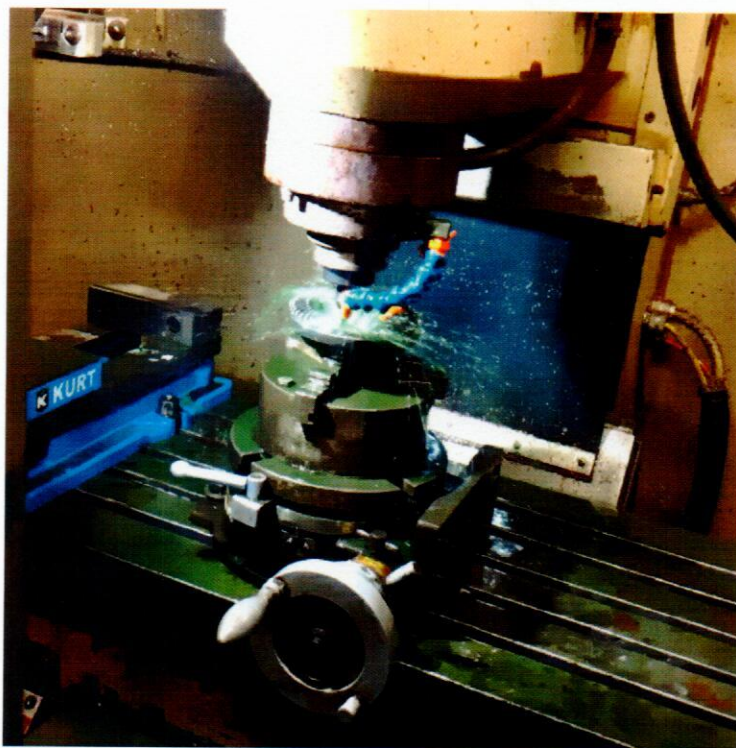
Finished set of 16 extruder knives



CNC embossing



Fabrication and installation of custom winch mount for four-wheeler



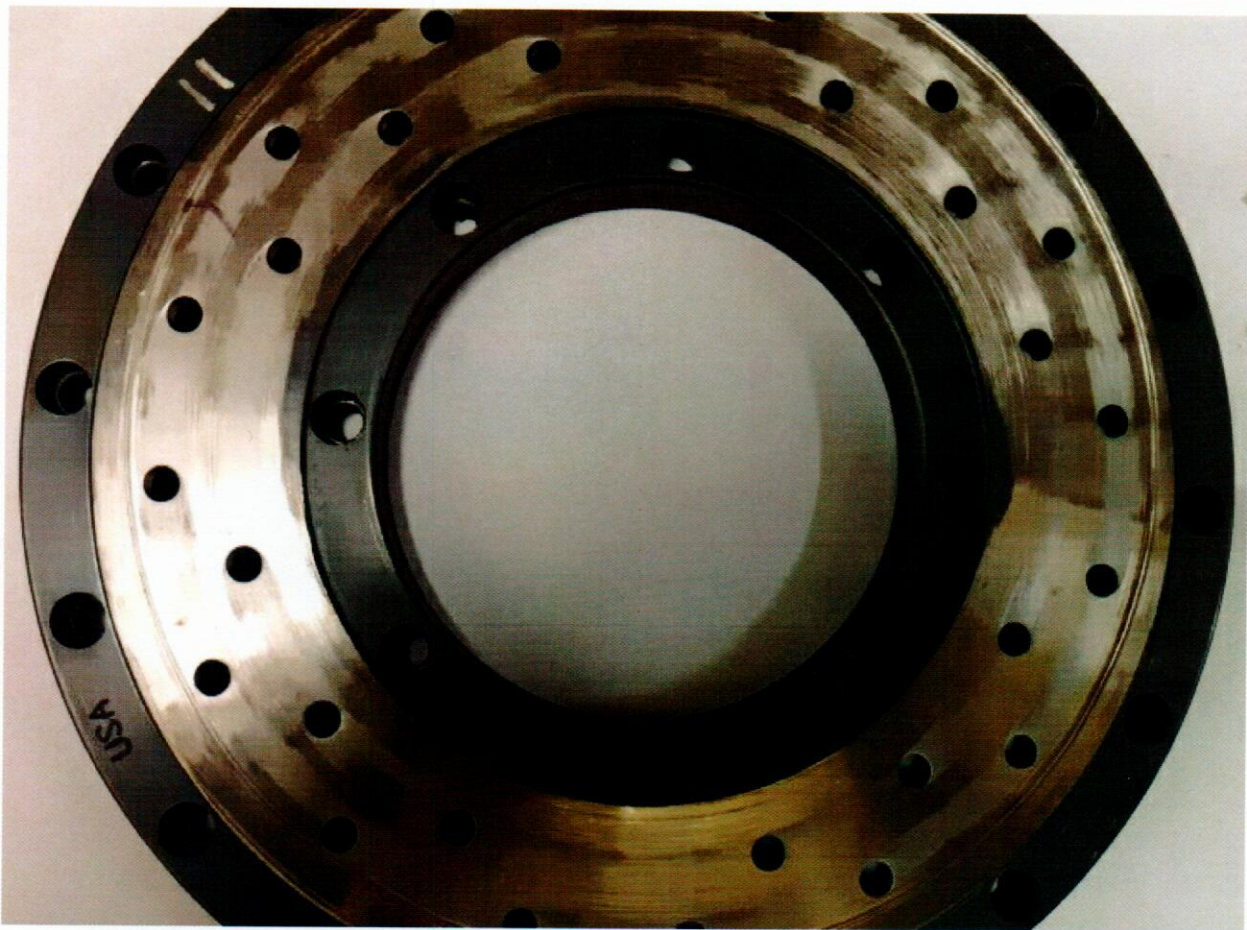
Rebuilding teeth on a hypoid gear



Building a stainless steel top
bbq grill cabinet



Cutting parts from copper plate



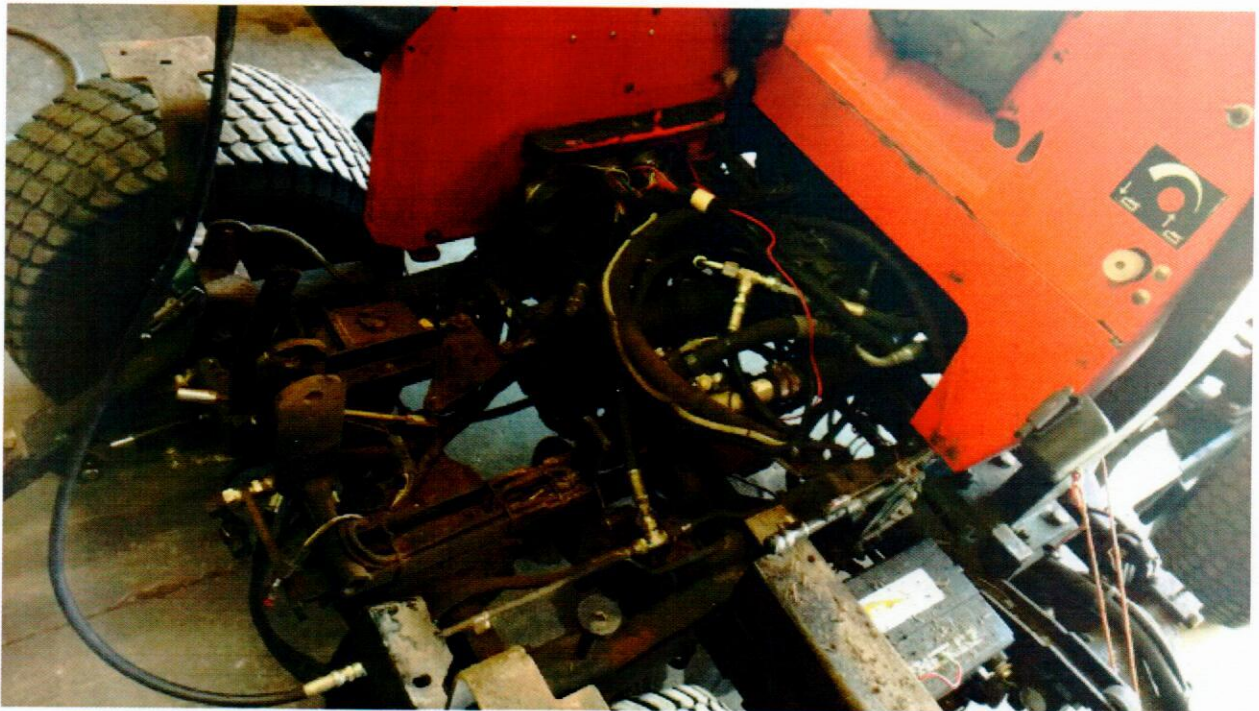
Die plate rebuild



Welding of all sorts



Removal and installation of new forklift tires



Repairs to large golf course mower



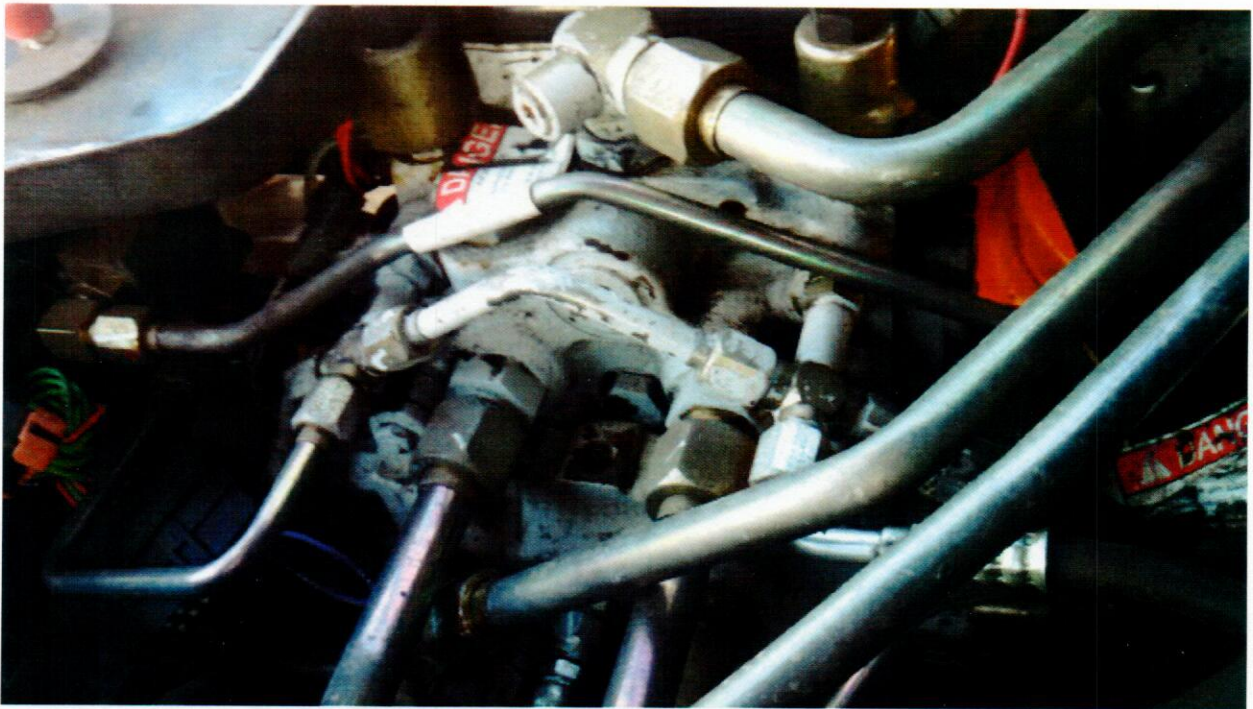
Roller packer repair



Repairs to large air compressor



Hoist repair on an older flat bed truck



Hydraulic skid steer repairs



Installing a leg and crow's nest components; PMR Inc. component fabrication



Various repairs on water well drill rig



Making, modifying and installing a new flat bed on service truck